



Applications

- Cable Cutting and/or Recovery
- Umbilical Cutting and/or Recovery
- Pipeline Recovery
- Rock Removal/Relocation
- Cutting of Cable/Umbilical up to 260mm
- Cutting of Wire Rope up to 8"

Services

- Real Time Sonar Monitoring for locating product
- Subsea Camera and Lights

Capabilities

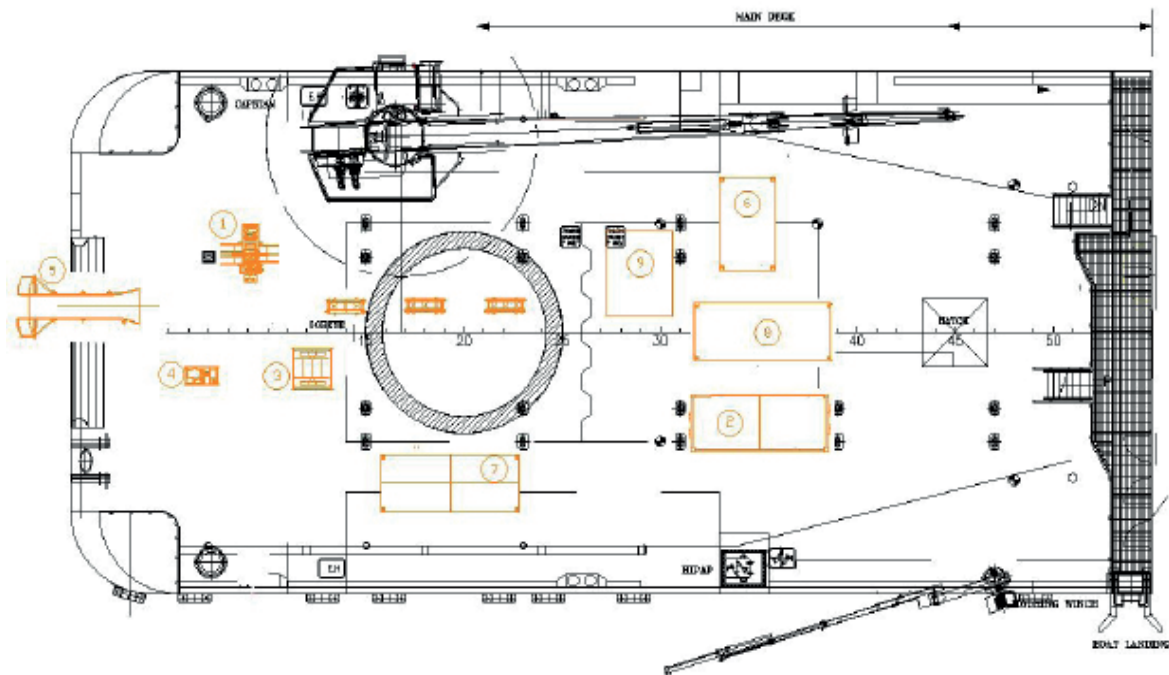
Maximum flow	70l/min
Maximum pressure	350 Bar
SWL (Vertical)	12Te
SWL (Horizontal)	5Te
Maximum grip force	50kN
Minimum grab diameter	50mm
Maximum grab diameter	1,100mm
Operating depth	0-3000m*

- Various Guillotine Cutters available for different products.
- *Equipment required for operation beyond 200m may vary.

Personnel

- 2 operators for 24hr operations

RSG-C Deck Plan



Key

No.	Item	Dimensions (m)	Weight (kg)
1	RSG-C Tool	2.90 x 2.40 x 2.80	2,900
2	Spares Container (Rotech)	6.10 x 2.44 x 2.90	12,000
3	RSGC Hydraulic Spooler	1.77 x 1.77 x 2.00	3,000
4	RSGC Electro/Hydraulic Power Unit	1.50 x 0.80 x 1.62	1,000
5	Overboard Chute	2.90 x 0.84 x 1.17	1,000
6	Control Shack	3.96 x 2.44 x 2.90	8,000
7	Dual Air Compressor	6.10 x 2.44 x 2.40	12,800
8	20FT Half Height	6.10 x 2.44 x 1.40	11,000
9	Deck Winch	TBC	TBC

For over two decades Rotech have pioneered the development of cutting edge subsea controlled flow excavation technology. A dedication to innovation has seen Rotech continually evolve and enhance our specialised equipment to meet demand and deliver for the needs of many major clients in the subsea oil & gas and energy sectors.