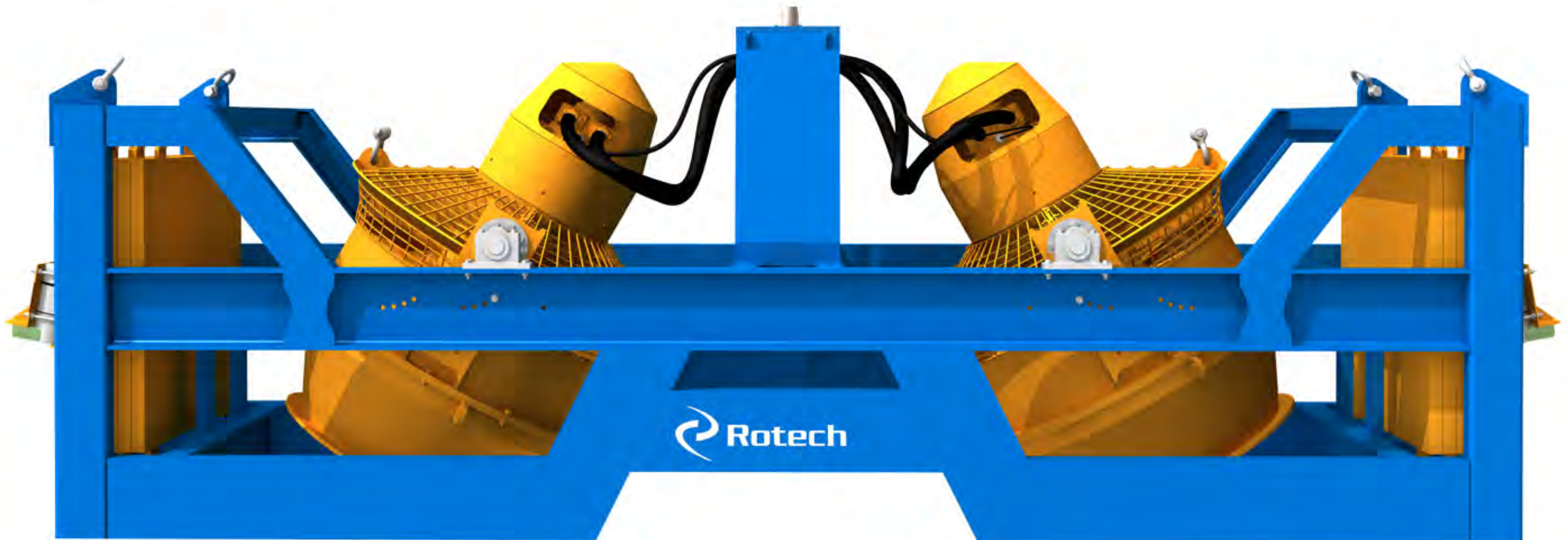


World leaders in excavation since 1994

For over two decades Rotech have pioneered the development of cutting-edge subsea controlled flow excavation technology. A dedication to innovation has seen Rotech continually evolve and enhance our specialised equipment to meet demand and deliver for the needs of many major clients in the subsea oil & gas and energy sectors.



patents pending

Applications :

- Cable/Pipeline/Umbilical Trenching
- Cable/Pipeline/Umbilical Deburial
- Freespan & Sandwave Clearance
- Backfilling & Burial
- Jack Up Spud Can Clearing & Cleaning
- UXO & Salvage Deburial
- Rock Dump & Drill Cutting Removal
- Harbour Clearance
- Subsea Structure Foundation Access

Rotech Personnel :

- 6 operators for 24hr operations
- 2 additional operators are supplied to operate the jetting system for soils in excess of 60kPa

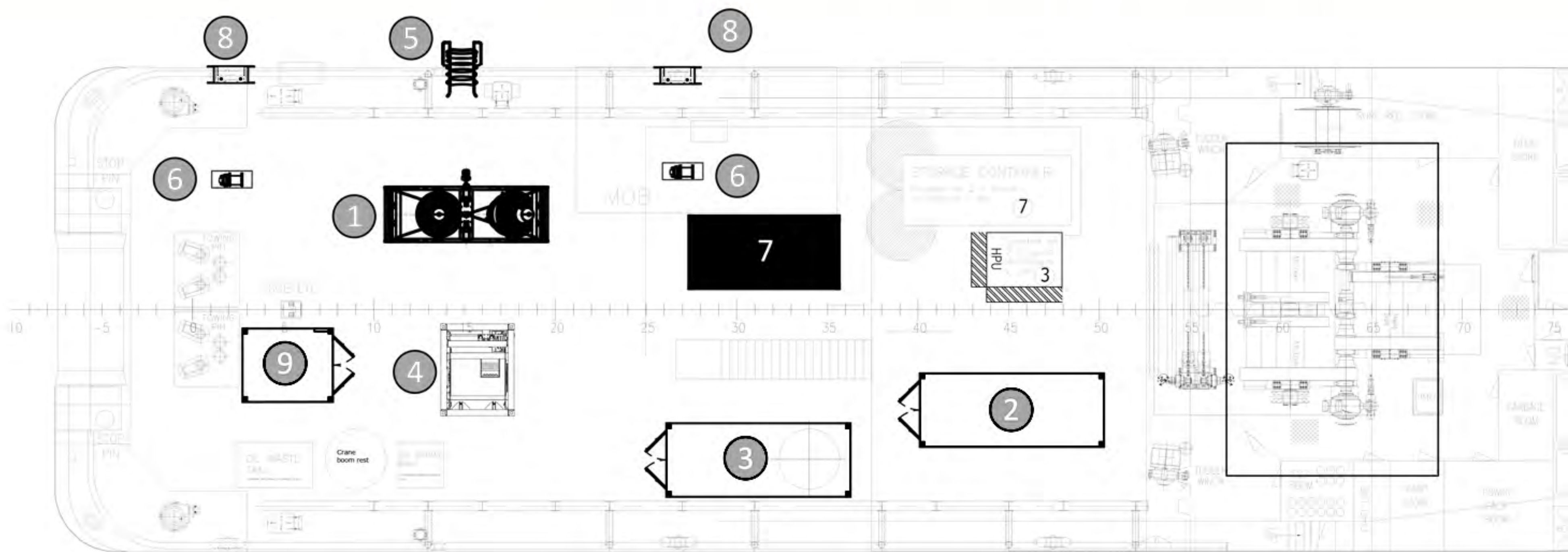
Services :

- Safer non-contact methods
- Controlled & Mass Flow Excavation
- Highly qualified & experienced operators
- Real time sonar monitoring of service
- Rotech Engineering & Fabrication

TRS2 Capabilities :

- Operating depths 1.5m - 300m*
- * 3000m with additional electric power unit.
- Excavator Outlet Pressure 0 to 60kPa
- Velocity 0 - 10m/s
- TRS2 Cutting of soils 180kpa

see deck plan on other side



Rotech Subsea Equipment			
Item	Item	Dimensions (m)	Weight (kg)
1	TRS2 Tool	5.4 x 1.83 x 2.24	12000
2	Tool HPU	6.10 x 2.45 x 2.40	16000
3	Spares container (Rotech)	6.10 x 2.45 x 2.70	12000
4	Hydraulic Umbilical Winch	2.26 x 2.56 x 2.42	10000
5	Umbilical Chute	2.90 x 0.84 x 1.17	1000
6	Deck Tugger	1.34x0.56 x 0.69	1100
7	Tugger Compressor	5.02 x 2.45 x 2.51	10000
8	Universal Roller Fairlead (Option)	1.55 x 0.56 x 1.14	500
9	Control Shack (Option)	3.05 x 2.45 x 2.60	5000